

LTB-12 rackmount platform

READY FOR INDUSTRY 4.0



PART OF THE
EXFO | FTB ecosystem

SPEC SHEET

The LTB-12 is a powerful, scalable, 12-slot rackmount platform designed for advanced lab and manufacturing applications.

KEY FEATURES AND BENEFITS

Dedicated to optical modules: Specifically designed to meet optical applications' most demanding requirements

Flexible and scalable: Compact 4U solution with high-level module density for in-rack or tabletop applications

Hot swappable: Intelligent module with hot-swap capability, enabling a quick transition from platform to platform, or from rackmount platform to portable platform without powering down

Industrial-grade computer design: Simple, easy-to-use design powered by a quad-core processor with the Microsoft operating system

Out-of-band management: Optimal remote access for maintenance or initial setup using the Intel® Active Management Technology (Intel® AMT)

Connectivity: USB 3.0, LAN and AMT port for maximum connectivity options

Increased performance and data reliability: RAID 1 mirroring for redundancy and data protection

Automation: Power and flexibility to run automation software and protocol scripts without an external personal computer

Multi-user sharing: Efficient utilization of test resources and minimization of capital expenditures (CAPEX)

RELATED PRODUCTS



Optical power meter
FTBx-1750



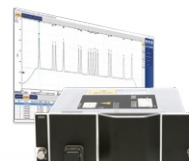
Optical light source
FTBx-2150/2250



Variable attenuator
FTBx-3500



Optical switches
FTBx-9150/9160

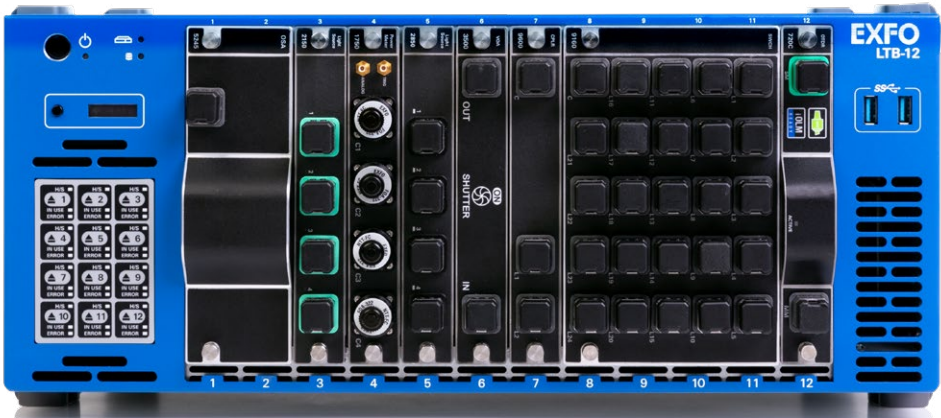


Optical spectrum analyzers
FTBx-5245/5255/
5243-HWA



EXFO'S LTB-12 PLATFORM

The LTB-12 first-in-class platform is a versatile solution addressing numerous optical measurement applications. Whether in the design lab or during the manufacturing process, the LTB-12 provides users with added versatility and power for today's complex optical systems.



DO MORE!

The Windows 10 operating system allows for a wide choice of third-party applications and supports an extensive range of USB devices.

- Start faster and multitask
- Use the Office suite
- Connect to printers, cameras, keyboards, mice, and more

Bring your own apps



Share your desktop
(e.g., using
TeamViewer)



Antivirus
software



Communicate
via email and
over-the-top
(OTT) apps



Record and
automate
actions



Share files via
cloud-based
storage

OPTICAL TEST MODULES

HIGH-PERFORMANCE POWER METER



FTBx-1750

- Fast, accurate and flexible power measurements in a platform-based solution
- Remote measurement head for high-power readings

VARIABLE ATTENUATOR



FTBx-3500

- Ideal for transceiver testing and system verification in demanding 24/7 production environments
- Power monitoring and BER testing

OPTICAL SWITCHES



FTBx-9150/9160

- Provide highly accurate and repeatable fiber-to-fiber switching
- MEMs-based design or opto-mechanical models available
- From 1x2 up to 1x32 configurations

OPTICAL SPECTRUM ANALYZERS



FTBx-5245/FTBx-5255

Delivers a full range of spectral analysis capabilities for testing lasers, transmitter optical subassemblies (TOSAs), transmitters or full optical systems



FTBx-5243-HWA

High wavelength accuracy optical spectrum analyzer for DWDM, CWDM and DWDM over CWDM networks

UTILITY MODULE



FTBx-9600

- The utility module can integrate couplers and splitters into the LTB-12 platform
- 1x2 up to 1x8 couplers with various ratios

LIGHT SOURCES



FTBx-2150

Single or multiwavelength, multimode LED diodes and singlemode DFB lasers for insertion loss and optical return loss testing



FTBx-2250

Broadband light source, covering all bands required for telecommunication applications and PON testing



FTBx-2850

µTLA continuous wave (CW) tunable laser with a high-power output, narrow linewidth and high-resolution tunability for coherent/OFDM transmission and WDM network emulation

OTDR MODULES



FTBx-720C

Ideally designed OTDR for everyday field testing in any access network. With an iOLM application for both singlemode and multimode testing, it's the most automated and intelligent troubleshooting tool for FTTA, LAN and data centers



FTBx-730C

Seamlessly characterize splitters in PON FTTx and MDU applications



FTBx-735C

High-resolution OTDR designed for metro network testing and splitter characterization in PON FTTx applications



FTBx-750C

High dynamic range combined with high resolution for highly accurate fiber characterization

FIBER CONNECTOR INSPECTION AND CERTIFICATION—THE ESSENTIAL FIRST STEP



Taking the time to properly inspect a fiber-optic cable can prevent a slew of problems down the line—saving you time, money and headaches.

FIP-430B | The first fully automated fiber inspection probe for the field

Housing a unique automatic focus adjustment system, the FIP-430B automates each operation in the connector endface inspection sequence, transforming this critical process into one quick and easy step, which can be performed by technicians of all skill levels.

Three models to fit your budget

100%
automated^a

1-step
process^a

57%
shorter test time^b

| FEATURES | | | |
|--|-------------------|----------------------------|-----------------------------|
| | Basic FIP-410B | Semi-automated FIP-420B | Fully automated FIP-430B |
| Three magnification levels | ✓ | ✓ | ✓ |
| Image capture | ✓ | ✓ | ✓ |
| Five-megapixel CMOS capturing device | ✓ | ✓ | ✓ |
| Automatic fiber image-centering function | X | ✓ | ✓ |
| Automatic focus adjustment | X | X | ✓ |
| Onboard pass/fail analysis | X | ✓ | ✓ |
| Pass/fail LED indicator | X | ✓ | ✓ |

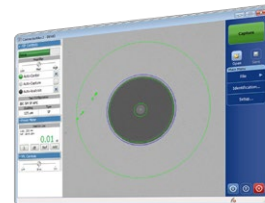
Read the FIP-400B specification sheet or visit EXFO.com/keepthefocus for more information.

SOFTWARE TEST TOOLS

These platform-based software testing tools enhance the value of the LTB-12 platform, providing additional monitoring and inspection testing capabilities.

Software applications—ConnectorMax2

Providing lightning-fast results in the first step of fiber-link testing, ConnectorMax2 is a powerful platform-based, automated inspection application; it delivers quick pass/fail assessment of connector end faces and is specifically designed to save both time and money in the field and in the lab.



ConnectorMax

Intel® Active Management Technology (Intel® AMT)



Remotely manage the platform (out-of-band management) without being dependent on the operating system or the state of the unit. The AMT Web-based application simplifies the out-of-the-box experience and, as an open-source solution, allows programmable remote troubleshooting recovery with extended capabilities and increased effectiveness.

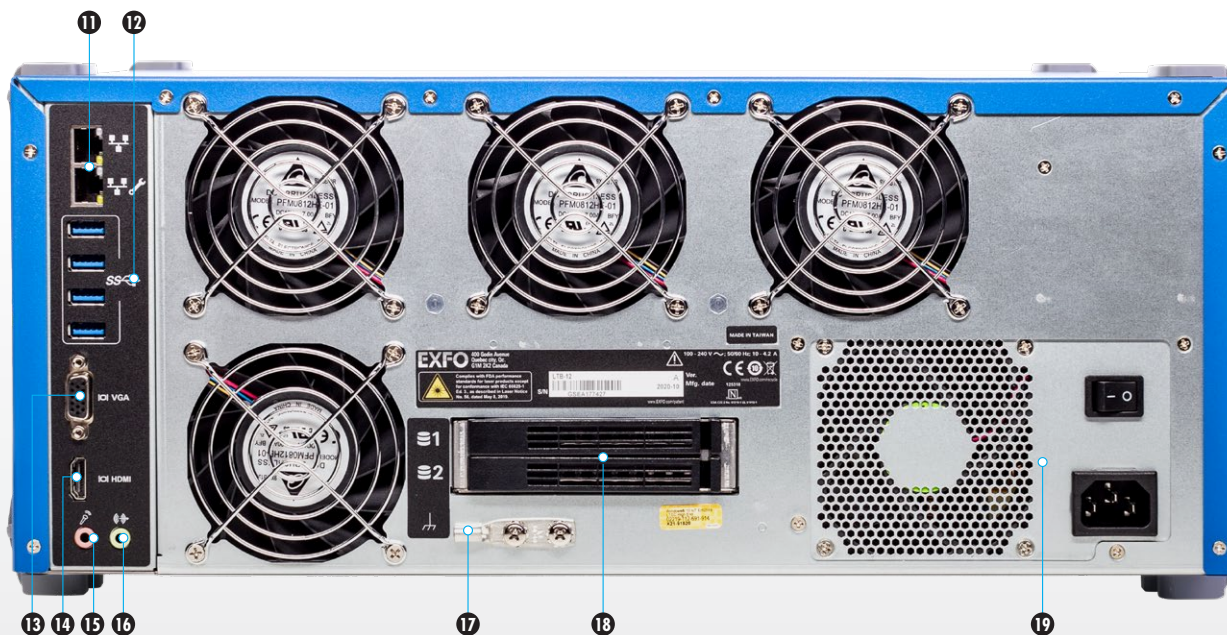
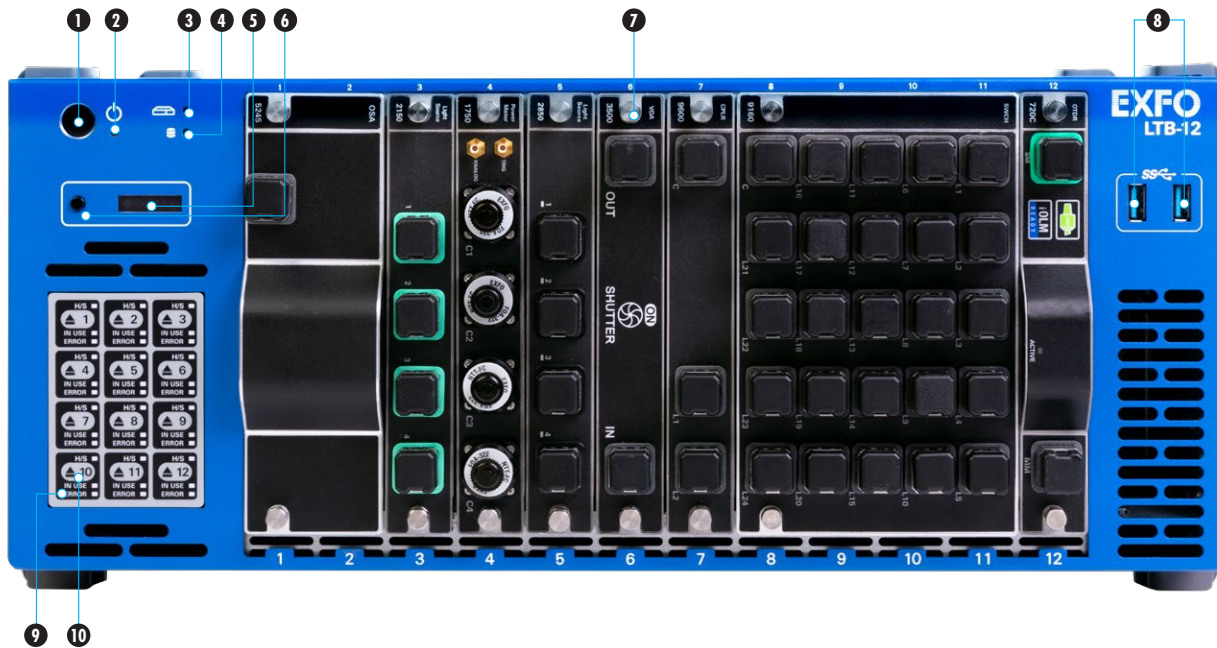
a. Model FIP-430B only.

b. Data sourced from EXFO's case study, with calculation based on typical analysis time.

ADAPTED FOR DEDICATED APPLICATIONS. DEDICATED TO HELPING YOU ADAPT.

Thanks to its small format, ultra-powerful processing and highly intuitive interface, the LTB-12 is optimized to enable lab users to carry out dedicated optical and photonic integrated circuit (PIC) test applications simply and efficiently.

- | | | | |
|------------------------------|--|-----------------------|-----------------------------|
| 1 Power button | 6 Display activation button | 11 Ethernet ports (2) | 16 Audio port |
| 2 Power LED | 7 Module slots (12 available in total) | 12 USB 3.0 ports (4) | 17 Grounding lug |
| 3 Status LED | 8 USB 3.0 ports (2) | 13 Video port (VGA) | 18 Hard disk drive bays (2) |
| 4 Hard disk LED | 9 Module status LEDs | 14 Video port (HDMI) | 19 Power supply |
| 5 System information display | 10 Module eject button | 15 Microphone port | |



SPECIFICATIONS^a

| | | |
|--------------|--|--|
| Mainframe | Quad-core Intel processor / 8 GB RAM / Windows 10 | |
| Interfaces | <ul style="list-style-type: none"> • RJ45 LAN 10/100/1000 Mbit/s ports (2) • USB 3.0 ports (6) | <ul style="list-style-type: none"> • HDMI and VGA video ports • Headset and microphone ports |
| Storage | 128 GB SSD | |
| Power supply | AC input: 100 V – 240 V \sim ; 50/60 Hz; 10 – 4.2 A | |

GENERAL SPECIFICATIONS

| | |
|-------------------------------|---|
| Size (H x W x D) ^b | 199 mm x 459 mm x 436 mm (7 13/16 in x 18 1/16 in x 17 3/16 in) |
| Weight | 16 kg (36 lb) |
| Temperature | 0 °C to 40 °C (32 °F to 104 °F) |
| Operating | |
| Storage | -40 °C to 70 °C (-40 °F to 158 °F) |
| Relative humidity | 0 % to 80 % non-condensing |

ACCESSORIES

| | | | |
|---------|------------------------------|---------|---------------------------------------|
| GP-130 | GPIB cable (6 feet/2 meters) | GP-2259 | Benchtop feet pads |
| GP-2016 | RJ45 LAN cable (10 feet) | GP-2296 | 19-inch rackmount brackets (kit of 2) |
| GP-2256 | FTBx module slot blank cover | GP-3109 | 23-inch rackmount shelf |
| GP-2258 | USB to GPIB adapter | | |

LASER SAFETY



a. All specifications valid at room temperature.

b. Size only includes feet and not rackmount bracket. Rackmount configuration will fit inside 4U, 19-inch bay.

ORDERING INFORMATION

LTB-12-XX-XX-XX

Additional hard drive

00 = Without extra hard drive
RHD = RAID drive (128 GB SSD)

Inspection probe base tips^a

APC = Includes FIPT-400-U25MA and FIPT-400-SC-APC
UPC = Includes FIPT-400-U25M and FIPT-400-FC-SC

Inspection probe models

00 = Without inspection probe

FP410B = Digital video inspection probe^b
Triple magnification

FP420B = Analysis digital video inspection probe^b
Automated pass/fail analysis
Triple magnification
Autocentering

FP430B = Automated analysis digital video inspection probe^b
Automated focus
Automated pass/fail analysis
Triple magnification
Autocentering

Example: LTB-12-RHD-FP430B-APC

a. Available if inspection probe is selected. For more information concerning all available optional tips, please visit www.EXFO.com/FIPTips.

b. Includes ConnectorMax2 software.

EXFO headquarters T +1 418 683-0211 **Toll-free** +1 800 663-3936 (USA and Canada)

EXFO serves over 2000 customers in more than 100 countries. To find your local office contact details, please go to www.EXFO.com/contact.

EXFO is certified ISO 9001 and attests to the quality of these products. EXFO has made every effort to ensure that the information contained in this specification sheet is accurate. However, we accept no responsibility for any errors or omissions, and we reserve the right to modify design, characteristics and products at any time without obligation. Units of measurement in this document conform to SI standards and practices. In addition, all of EXFO's manufactured products are compliant with the European Union's WEEE directive. For more information, please visit www.EXFO.com/recycle. **Contact EXFO for prices and availability or to obtain the phone number of your local EXFO distributor.**

For the most recent version of this spec sheet, please go to www.EXFO.com/specs.

In case of discrepancy, the web version takes precedence over any printed literature.